

NE AA FAIGA E 'TAU O FAKAMOEMOE NE KOE MA MAUA KOE NE TE OMICRON

UPDATED 16 MARCH 2022 4:00PM



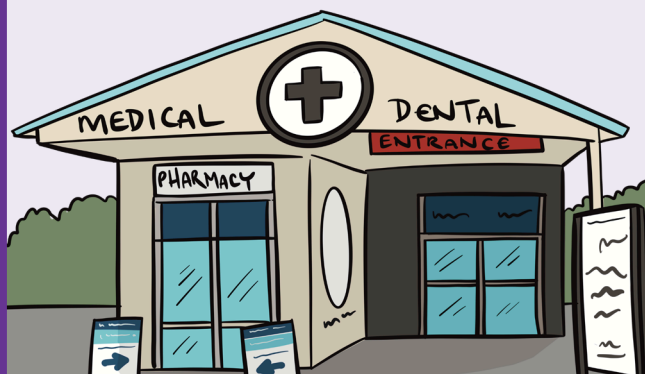
PREPARE
PACIFIC

ASIASIGA O TE OLA LEI



Mai lalo o te Palani Fakafesagai ki te Omicron i te taimi nei, kafai koe ne asi kae ko maua koe ne te Covid-19, ka isi se fekau e taipa atu mai i te napa (2328) tela ka fakasino atu ne ia ki a koe se lausalalau, mo fakatonuga ki niisi gasuega a koe.

VAILAKAU



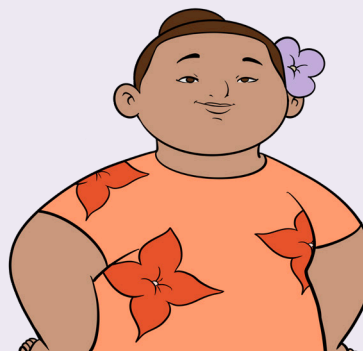
Ka manakogina ne koe ou vailakau, fesokotaki ki tou tokita masani o fakailoa kiei ia koe ko sai-puipui i te fale. Fesili ki tou tokita masani ke fakaako ne latou te pepa o ou vailakau ki te fale-talavai, tela ka fakaako atu ne latou a vailakau ki a koe i te fale. Tou tokita masani e mafai o onono ki te fakasologa o igoa o fale-talavai kola e mafai ne latou o fai te galuega tenei.

FESOASOANI MEAKAI



Ka mafai ne koe, togi au meakai mo niisi kope kola e manakogina ne koe iluga i te neti, io me akai ki sou kaiga me se taugasoa ke avatu ne latou ne meakai ki a koe. Ka manakogina ne koe ne meakai mo niisi kope aka, fesokotaki ki te Covid-19 Welfare Line: 0800 512 337.

FESOASOANI TAU-TUPE



E mafai o maua ne koe te fesoasoani o te Covid-19 Leave Support Scheme mafai ne iku mai tau asiga ko maua koe ne te masaki, ko masaki foki koe i te Covid-19, kae ko se mafai foki ne koe o galue mai i te fale. Tou pule i te galuega e 'tau o fakatagi ne ia te fesoasoani tenei mo koe. E mafai foki ne koe o fakatagi kiei mafai a koe e galue mo koe. Mo se fakamatalaga lauefa, fanatu ki luga i te <http://covid19.govt.nz/isolation-care-/financial-support/>

Mo se fakalauefaga o fakamatalaga, fesokotaki ki te
Pacific Covid Helpline i te 0800 21 12 21