

NI A TE TATAU KE KE ILOA KAFAI KOE E MAUA I TE OMICRON

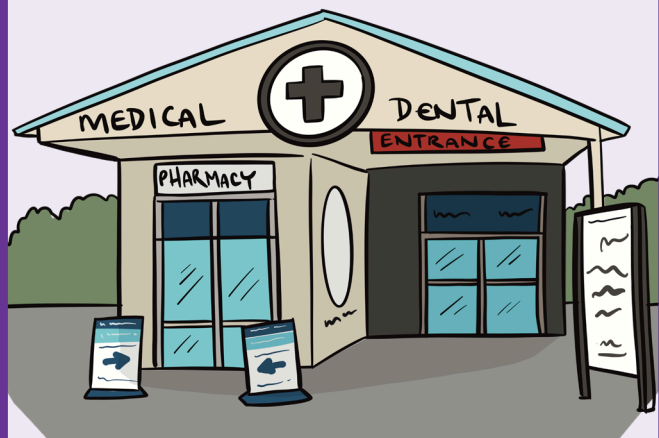


HIAKIGA O TE OLA MALÖLÖ



I lalo o te peleni mo te Omicron Response, kafari ko koe kua maua i te KOVITI-19, e maua atu tau text mai te numela (2328) ma fakatonu atu koe ke kikila ki na fakamatalaga e maua atu i luga o te uepehaite ki na mea e tatau ke fai.

FUĀLAKAU



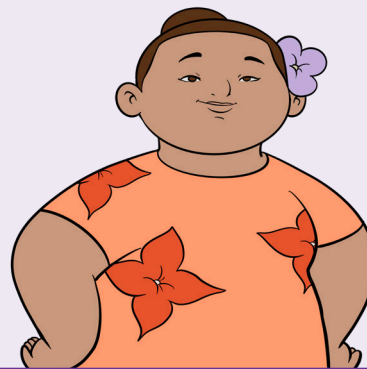
Fakafehokotaki tau fomai kāiga kafari e manakomia ni au fuālakau, ma fakailoa ki ei ko koe e nofo puipuia i te fale. Lea ki tau fomai ke lafo na pepa o au fuālakau ki he fale talavai, e kilatou mafaia oi kavatu au fuālakau ki to fale

FEHOAHOANIGA MO NA MEAKAI



Kafari e mafai, ota tau fakatau ma na mea e manakomia i luga o te neti, pe lea ki he tino o to kāiga pe ko ni au uō ke momoli atu ni au meakai. Kafari e manakomia e koe he fehoahoniga mo na meakai ma ietahi mea, telefoni ki te telefoni a te KOVITI-29 Welfare: 0800 512 337

FEHOAHOANIGA TAU TUPE



E ono mafai koe ke apalai mo te COVID-19 Leave Support Scheme kafari ko koe kua maua I te famai, ma ko koe foki e hē mafai ke galue mai te fale. Ko tau galuega e tatau ke apalai ki ei mo koe. E mafai foki koe ke apalai ki ei kafari ko koe e galue lava mo koe. Kikila ifo ki tenei laupepa mo ni ietahi fakamatalaga
<https://covid19.govt.nz/isolation-and-care/financial-support/>

Fakafehokotaki mai tenei numela mo ni ietahi fakamatalaga
Pacific Covid Vaccination Helpline on 0800 21 12 21