

O VAEGA E AO ONA MATA'ITŪINA PE A MAUA I LE OMIKOLONA

UPDATED 16 MARCH 2022 4:00PM



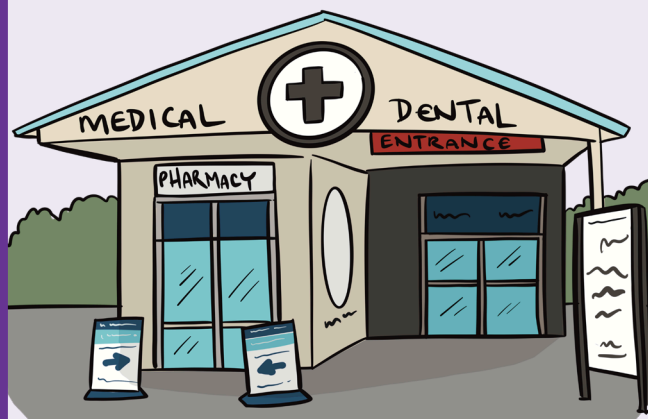
PREPARE
PACIFIC

SIAKI LOU SOIFUA MALŌLŌINA



I lalo o le ta'iala mo le tali atu i le Omikolona, afai e fa'amaonia ua e a'afia ile Koviti-19 o le a e maua se text mai le 2328 e fa'asino oe i le upega tafa'ilagi o lo'o i ai fa'atonuga i mea e ao ona fai.

VAILA'AU MA FUALA'AU



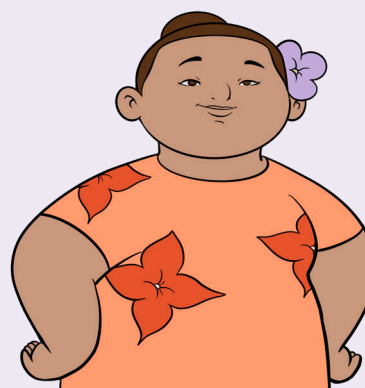
Afai e te mo'omia ni vaila'au po o ni fuala'au, ia vili lau foma'i ma fa'a'iloa o lo'o e fa'anofu'esea. Fesili i lau foma'i e lafo sau talavai ile fale talavai, latou te momoli atu i lou fale. E mafai e lau foma'i ona siaki po'o ai fale talavai o lo'o faia lea auunaga.

FESOASOANI TAU MEA'AI



Pe a mafai, oka au fa'atauga i luga o le upega tafa'ilagi, pe talosaga aiga ma uo, e fesoasoani atu mo oe. Afai e te mo'omia se fesoasoani mo mea'ai po'o nisi vaega, vala'au le COVID-19 Welfare line: 0800 512 337

FESOASOANI TAU TUPE



E mafai ona e agava'a mo le COVID-19 Leave Support Scheme pe afai ua fa'amaonia ua e a'afia i le Koviti-19, ma e lē mafai ona e galue i le fale. E tatau e lau galuega ona faia se apalai moo e. E mafai foi ona e apalai pe afai e te faigaluega lava oe mo oe. Mo nisi fa'amatalaga alu i le <https://covid19.govt.nz/isolation-and-care/financial-support/>

Mo nisi fa'amatalaga feso'ota'i le
Pacific Covid Vaccination Helpline i le 0800 21 12 21