

KOE HEIGOA KE AMAAMANAKI ATU KI AI KAEKE KUA MOUA A KOE HE OMICRON

UPDATED 16 MARCH 2022 4:00PM



**PREPARE
PACIFIC**

FUAFUA E TINO



I lalo hifo he palana ke totoko atu kehe Omicron, kaeke kua tivi positivi a koe kehe Koviti-19 to fakailoa atu he text mai he numela 2328 e website ke matutaki atu a koe ke iloa e tau mena ke taute.

TAU SEGAVAI



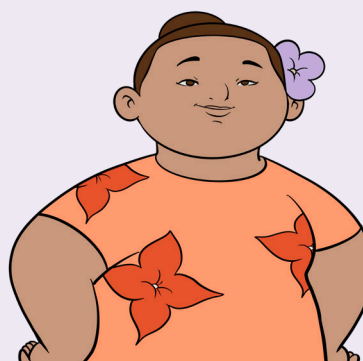
Ka manako segavai a koe ti matutaki atu kehe haau a Ekekafo moe fakailoa atu ko koe nofo i kaina ke pupui e gagao. Ole ke he Ekekafo haau ke fakafano atu e tohi ke moua e segavai (prescription) ke he fale moua e tau segavai (pharmacy) moe ko hai ka taatu kehe kaina haau. Maeke he Ekekafo haau ke fakakia ko hai e tau fale moua segavai ne maeke ke fakafano atu e tau segavai haau ki kaina.

LAGOMATAI KEHE TAU MENA KAI



Kaeke ke maeke ia koe, fakatau e tau mena kai moe falu a koloa online, puke fakailoa kehe magafaoa puke tau kapitiga ke taatu e tau mena kai ki kaina. Ka manako lagomatai ke lata moe tau mena kai puke falu koloa, matutaki atu kehe COVID-19 Welfare numela telefoni 0800 512 337.

LAGOMATAI TUPE



Neke lialiga maeke ia koe ke moua e lagomatai tupe mai he COVID-19 Leave Support Scheme kaeke kua tivi positivi a koe moe gagao Koviti-19, moe nakai maeke ke gahua mai kaina. Koe takitaki gahua haau ke kumi atu e lagomatai nei. Maeke foki a koe ke kumi lagomatai kaeke ko koe koe tagata self-employed. Ke moua falu a fakamaamaaga matutaki atu kehe website <https://covid19.govt.nz/isolation-and-care/financial-support/>

**Ke moua e falu fakamaamaaga matutaki atu kehe
Pacific Covid Vaccination Helpline numela 0800 21 12 21**