

TE AU APINGA TAAU KA TAPAPA ATU ME TU'IA KOE E TE OMICRON

UPDATED 16 MARCH 2022 4:00PM

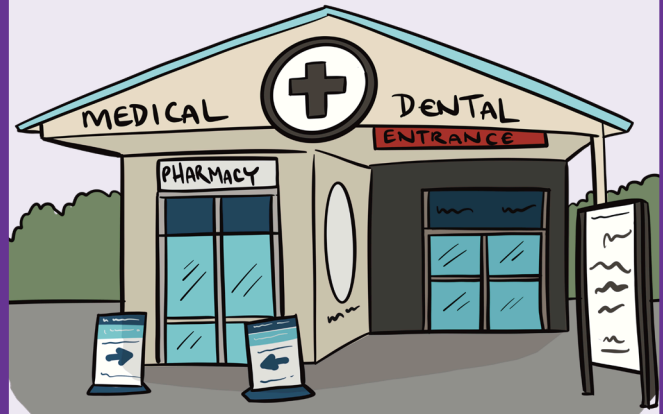


AKARAKARA'ANGA i TOOU TURANGA ORAANGA MEITAKI



I teia tuatau, kua oti te au apinga i te akanoo. Me kite ia mai te maki i roto i toou test, ka text ia atu mei runga atu i te numero [2328] e oti, ka tuku ia atu te kupe roro uira no te au takainga taau ka anoano'ia kia aru atu.

VAIRAKAU



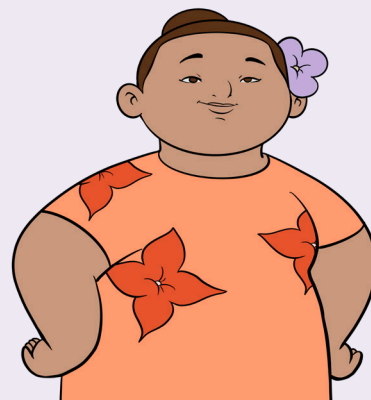
Me ka anoano vairākau koe, rīngi atu i toou taote, akakite atu e, tei roto koe i te tūranga 'Akatakakē'anga Maarae Ora i te ngutu'are. Pati atu ki toou taote, kia tuku atu i te peapa no toou vairākau ki ko i tetai Pharmacy, e na te Pharmacy rai e kave atu ki toou ngutu'are.

TAUTURU NO TE KAI



Me ka rauka ia koe, okooko ua atu i ta kōtou kai na runga i te kupe roro uira, me kore ara, rīngi atu i tetai tangata taau i akanoo kia aere atu i te okooko i te au apinga ka anoano'ia. Me ka anoano tauturu koe no te kai e tetai au apinga ke atu te ka anoano'ia i te ngutuare, rīngi atu i te numero 0800 512 337.

MONI TAUTURU



Te vai nei tetai papaki tei to'ia e te maki, e kare e rauka i te angaanga mei te ngutuare atu, ka tau no te tuanga tauturu o te Leave Support Scheme. Na taau ngai angaanga teia tuanga tauturu e pati atu noou. Me ko koe rai toou pu, ka rauka ia koe i te pati atu i teia tauturu. Aoro atu i te kupe roro uira: <https://covid19.govt.nz/isolation-and-care/financial-support/>

**Me ka inangaro koe i tetai au akamaramarama'anga ke atu ringi:
I te Taniuniu Tauturu Pacific Covid Vaccination i runga i te numero 0800 21 12 21**